

ATSDR Land Reuse Site Screening Tool

Environmental Health

What is the ATSDR Land Reuse Site Screening Tool?

This tool is a searchable inventory and rapid site screening tool that evaluates multiple chemicals for exceedances of ATSDR Health Comparison Values¹. This tool allows users to assess sites by past/future use, institutional controls, sensitive populations, and suspected or confirmed contamination.



Why was the Land Reuse Site Screening Tool developed?

A survey of local health departments indicated a need for a system to:

- Provide inventory of sites.
- Store records for public inquiry of sites.
- Respond to inquiries.
- Catalogue institutional controls, health concerns, violations, spills, contaminants, and emergency response events related to the property.
- Provide a "How To" guide to conduct a site visit.
- Store records for public inquiry of sites.
- Evaluate analytical data (for exceedances of ATSDR Health Comparison Values) using the maximum detected values.
- Import and process laboratory data (10,000 data points per minute throughput).
- Provide a site document repository, allowing attachment of site photographs, diagrams, reports, and other electronic files for rapid retrieval.

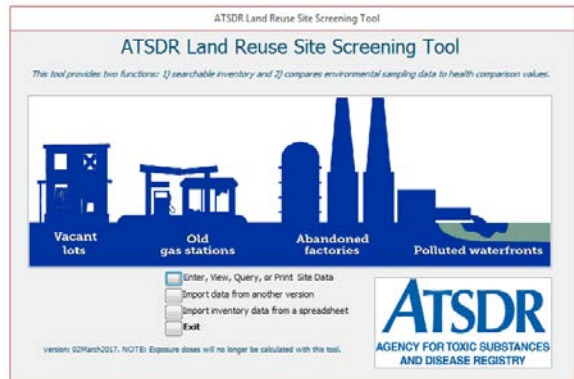
What entities are using the ATSDR Land Reuse Site Screening Tool?

- Health Departments (from local to state level)
- Development Community
- Regulatory Agencies
- Planners
- Environmental Health Professionals

Continued on next page

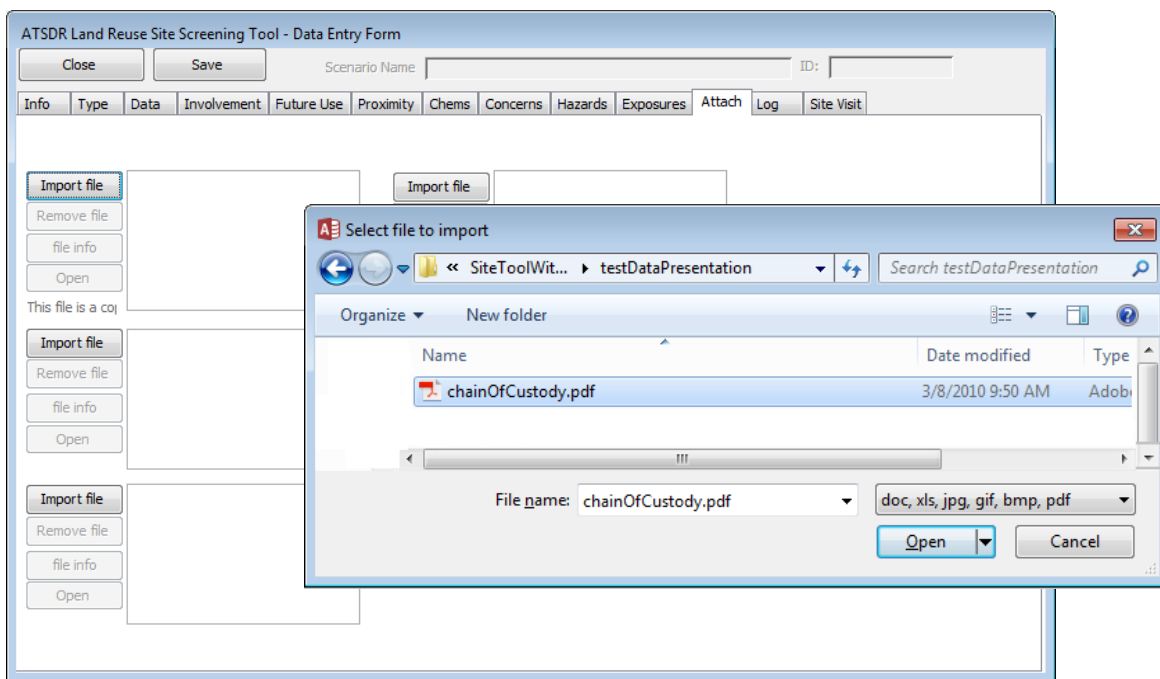
¹ Health Comparison Values (CVs) are concentration of a substance in air, water, or soil that is unlikely to cause harmful health effects in exposed people. The CV is used as a screening level during the public health assessment process. Substances found in amounts greater than their CVs might be selected for further evaluation in the public health assessment process.

ATSDR Land Reuse Site Screening Tool



ATSDR Land Reuse Site Screening Tool: Soil-Results based on the maximum values.

Chemical	CASN	Units	CV name	CV value	>CV	N	#ND	# non ND>CV	MXConc
<u>Actual data are above a CV value.</u>									
benzene	000071-43-2	ppm	Soil CRE G	7E+00	Y	25	0	25	8.4E+02
min=1.4E+1, Q1=4.1E+1, median=1.6E+2, arithmetic mean=2.1E+2, Q3=3.5E+2, max=8.4E+2, range=8.2E+2 MMQ1.....Q2.....Q3.....MX CV.....									



To learn more about the ATSDR Land Reuse Site Screening Tool:
 Contact Laurel Berman at (312) 886-7476, Leann Bing at (404) 562-1784,
 or Gary Perlman at (617) 918-1492, or e-mail us at atsdr.LandReuse@cdc.gov.