

SVI 2014 Documentation - 1/19/2022

Please see data dictionary and SVI 2014-2010 crosswalk below.

Introduction

What is Social Vulnerability?

Every community must prepare for and respond to hazardous events, whether a natural disaster like a tornado or a disease outbreak, or an anthropogenic event such as a harmful chemical spill. The degree to which a community exhibits certain social conditions, including high poverty, low percentage of vehicle access, or crowded households, may affect that community's ability to prevent human suffering and financial loss in the event of disaster. These factors describe a community's social vulnerability.

What is the Social Vulnerability Index?

ATSDR's Geospatial Research, Analysis & Services Program (GRASP) has created a tool to help public health officials and emergency response planners identify and map the communities that will most likely need support before, during, and after a hazardous event.

The Social Vulnerability Index (SVI) indicates the relative vulnerability of every U.S. Census tract. Census tracts are subdivisions of counties for which the Census collects statistical data. The SVI ranks the tracts on 15 social factors, including unemployment, minority status, and disability, and further groups them into four related themes. Thus each tract receives a ranking for each Census variable and for each of the four themes, as well as an overall ranking.

In addition to tract-level rankings, SVI 2010 and SVI 2014 also have corresponding rankings at the county level.

How can the SVI help communities be better prepared for hazardous events?

The SVI provides specific socially and spatially relevant information to help public health officials and local planners better prepare communities to respond to emergency events such as severe weather, floods, disease outbreaks, or chemical exposure.

The SVI can be used to:

- Allocate emergency preparedness funding by community need.
- Estimate the amount and type of needed supplies like food, water, medicine, and bedding.
- Decide how many emergency personnel are required to assist people.
- Identify areas in need of emergency shelters.
- Create a plan to evacuate people, accounting for those who have special needs, such as those without vehicles, the elderly, or people who do not understand English well.
- Identify communities that will need continued support to recover following an emergency or natural disaster.

Important Notes on the SVI Database

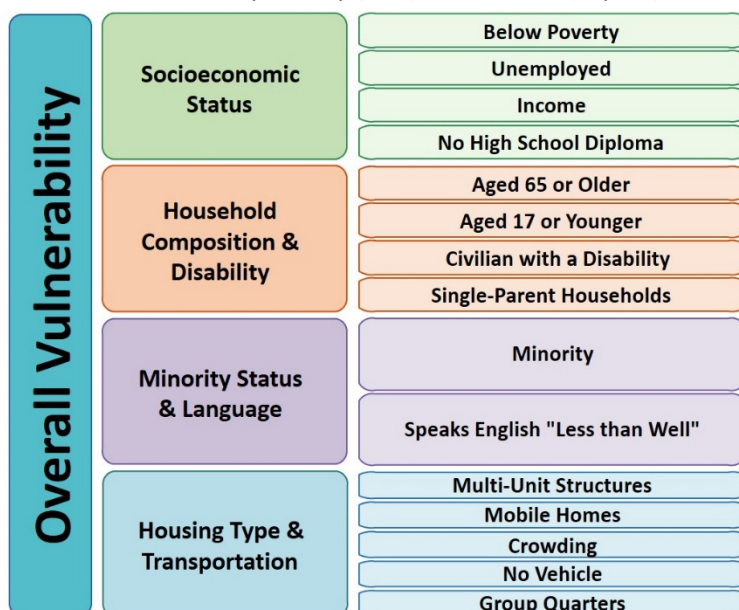
- For SVI 2000 and 2010, keep the data in geodatabase format. Converting to shapefile changes the field names. SVI 2014 is available for download in shapefile format. The 2014 names have been changed to accommodate shapefiles. A 2014 to 2010 "crosswalk" is included in this documentation.
- For US-wide or multi-state mapping and analysis, use the US database, in which all tracts/counties are ranked against one another. For individual state mapping and analysis, use the state-specific database, in which tracts/counties are ranked only against other tracts/counties in the specified state.
- Starting with SVI 2014, we've added a stand-alone, state-specific Commonwealth of Puerto Rico database. Puerto Rico is not included in the US-wide ranking.

- Starting with SVI 2014, we've added a database of [Tribal Census Tracts](https://www.census.gov/glossary/#term_TribalCensusTract) (https://www.census.gov/glossary/#term_TribalCensusTract).
- Tribal tracts are defined independently of, and in addition to, standard county-based tracts. The tribal tract database contains only estimates, percentages, and their respective MOEs, along with the adjunct variables described in the data dictionary below. Because of geographic separation and cultural diversity, tribal tracts are not ranked against each other nor against standard census tracts.
- Tracts with zero estimates for total population (N = 404 for U.S.) were removed during the ranking process. These tracts were added back to the SVI databases after ranking. The TOTPOP field value is 0, but the percentile ranking fields (RPL_THEME1, RPL_THEME2, RPL_THEME3, RPL_THEME4, and RPL_THEMES) were set to -999.
- For tracts with > 0 TOTPOP, a value of -999 in any field either means the value was unavailable from the original census data or we could not calculate a derived value because of unavailable census data.
- Any cells with a -999 were not used for further calculations. For example, total flags do not include fields with a -999 value.
- ArcGIS preserves leading 0s in the FIPS code fields of csv files. To preserve leading 0s in Excel, follow these steps:
 - Open a blank worksheet in Excel.
 - Click the DATA tab and choose to open a file from Text
 - Navigate to the csv file and choose to Import
 - In the Text Import Wizard, choose the Delimited data type, then Next
 - Choose the Comma delimiter, then Next
 - One by one, select fields based on FIPS codes (TRACTCE, ST, STCNTY, FIPS), set the Column data format to Text, then click Finish to open the csv with leading 0s preserved.
- See the **Methods** section below for further details.
- Questions? Please visit the SVI web site at <http://svi.cdc.gov> for additional information.

Methods

Variables Used

American Community Survey (ACS), 2010-2014 (5-year) data for the following estimates:



Text version of overall vulnerability image:

- Socioeconomic Status
 - Below Poverty
 - Unemployed
 - Income
 - No High School Diploma
- Household Composition & Disability
 - Aged 65 or Older
 - Aged 17 or Younger
 - Civilian with a Disability
 - Single-Parent Households
- Minority Status & Language
 - Minority
 - Speaks English “Less than Well”
- Housing Type & Transportation
 - Multi-Unit Structures
 - Mobile Homes
 - Crowding
 - No Vehicle
 - Group Quarters

For SVI 2014, we included two adjunct variables, 1) 2010-2014 ACS estimates for persons without health insurance, and 2) an estimate of daytime population derived from LandScan 2012 estimates. These adjunct variables are excluded from the SVI rankings.

Raw data estimates and percentages for each variable, for each tract, are included in the database. In addition, the margins of error (MOEs) for each estimate, at the Census Bureau standard of 90%, are also included. Confidence intervals can be calculated by subtracting the MOE from the estimate (lower limit) and adding the MOE to the estimate (upper limit). Because of relatively small sample sizes, some of the MOEs are high. It’s important to identify the amount of error acceptable in any analysis.

Rankings

We ranked Census tracts within each state and the District of Columbia, to enable mapping and analysis of relative vulnerability in individual states. We also ranked tracts for the entire United States against one another, for mapping and analysis of relative vulnerability in multiple states, or across the U.S. as a whole. Tract rankings are based on percentiles. Percentile ranking values range from 0 to 1, with higher values indicating greater vulnerability.

For each tract, we generated its percentile rank among all tracts for 1) the fifteen individual variables, 2) the four themes, and 3) its overall position.

Theme rankings: For each of the four themes, we summed the percentiles for the variables comprising each theme. We ordered the summed percentiles for each theme to determine theme-specific percentile rankings.

The four summary theme ranking variables, detailed in the Data Dictionary below, are:

- **Socioeconomic theme - RPL_THEME1**
- **Household Composition and Disability - RPL_THEME2**
- **Minority Status & Language - RPL_THEME3**
- **Housing & Transportation - RPL_THEME4**

Overall tract rankings: We summed the sums for each theme, ordered the tracts, and then calculated overall percentile rankings. Please note; taking the sum of the sums for each theme is the same as summing individual variable rankings. **The overall tract summary ranking variable is RPL_THEMES.**

Flags

Tracts in the top 10%, i.e., at the 90th percentile of values, are given a value of 1 to indicate high vulnerability. Tracts below the 90th percentile are given a value of 0.

For a theme, the flag value is the number of flags for variables comprising the theme. We calculated the overall flag value for each tract as the number of all variable flags.

For a detailed description of SVI variable selection rationale and methods, see [A Social Vulnerability Index for Disaster Management](#).

SVI 2014 Data Dictionary

Themes
1. Socioeconomic
2. Household Composition/Disability
3. Minority Status/Language
4. Housing Type/Transportation

Variables beginning with “E_” are estimates. Variables beginning with “M_” are margins of error for those estimates. Values of -999 represent “null” or “no data.”

The four summary theme ranking variables, detailed in the Data Dictionary below, are:

- Socioeconomic theme - RPL_THEME1
- Household Composition and Disability - RPL_THEME2
- Minority Status & Language - RPL_THEME3
- Housing & Transportation - RPL_THEME4

The overall tract summary ranking variable is RPL_THEMES.

2014 VARIABLE NAME	2014 DESCRIPTION	THEME	CENSUS or SVI TABLE(S)	TABLE FIELD CALCULATION	CALCULATION DESCRIPTION	NOTES
ST	State-level FIPS code		S0601	FIPS	In Excel, from Tract-level FIPS code, LEFT (FIPS, 2)	
STATE	State name		S0601	GEO.display-label	In Excel, use DATA Text to Columns to extract state name	
ST_ABBR	State abbreviation		N/A	N/A	Joined from Esri state boundary shapefile	
STCNTY	County-level FIPS code		S0601	FIPS	In Excel, from Tract-level FIPS code, LEFT (FIPS, 5)	In the county-level SVI database, the 5-digit STCNTY field is the FIPS field, used for joins.
COUNTY	County name		S0601	GEO.display-label	In Excel, use DATA Text to Columns to extract county name	
FIPS	Tract-level FIPS code		S0601	GEO.id	In Excel, RIGHT (GEO.id, 11)	
LOCATION	Text description of tract, county, state		S0601	GEO.display-label		
AREA_SQMI	Tract area in square miles		Census Cartographic Boundary File - U.S. Tracts 2014 500K	ALAND * 3.86102e-7	Conversion from square meters to square miles	
E_TOTPOP	Population estimate, 2010-2014 ACS		S0601	HC01_EST_VC01		
M_TOTPOP	Population estimate MOE, 2010-2014 ACS		S0601	HC01_MOE_VC01		

2014 VARIABLE NAME	2014 DESCRIPTION	THEME	CENSUS or SVI TABLE(S)	TABLE FIELD CALCULATION	CALCULATION DESCRIPTION	NOTES
E_HU	Housing units estimate, 2010-2014 ACS		DP04	HC01_VC03		
M_HU	Housing units estimate MOE, 2010-2014 ACS		DP04	HC02_VC03		
E_HH	Households estimate, 2010-2014 ACS		DP02	HC01_VC03		
M_HH	Households estimate MOE, 2010-2014 ACS		DP02	HC02_VC03		
E_POV	Persons below poverty estimate, 2010-2014 ACS	1	B17001	HD01_VD02		
M_POV	Persons below poverty estimate MOE, 2010-2014 ACS	1	B17001	HD02_VD02		
E_UNEMP	Civilian (age 16+) unemployed estimate, 2010-2014 ACS	1	DP03	HC01_VC07		
M_UNEMP	Civilian (age 16+) unemployed estimate MOE, 2010-2014 ACS	1	DP03	HC02_VC07		
E_PCI	Per capita income estimate, 2010-2014 ACS.	1	B19301	HD01_VD01		Fewer rows than other variables - joined to Census 2014 tracts. Contains null cells (i.e. -999).
M_PCI	Per capita income estimate MOE, 2010-2014 ACS	1	B19301	HD02_VD01		Fewer rows than other variables - joined to Census 2014 tracts
E_NOHSDP	Persons (age 25+) with no high school diploma estimate, 2010-2014 ACS	1	B06009	HD01_VD03		

2014 VARIABLE NAME	2014 DESCRIPTION	THEME	CENSUS or SVI TABLE(S)	TABLE FIELD CALCULATION	CALCULATION DESCRIPTION	NOTES
M_NOHSDP	Persons (age 25+) with no high school diploma estimate MOE, 2010-2014 ACS	1	B06009	HD02_VD03		
E_AGE65	Persons aged 65 and older estimate, 2010-2014 ACS	2	S1501	HC01_EST_VC31		
M_AGE65	Persons aged 65 and older estimate MOE, 2010-2014 ACS	2	S1501	HC01_MOE_VC31		
E_AGE17	Persons aged 17 and younger estimate, 2010-2014 ACS	2	B09001	HD01_VD01		
M_AGE17	Persons aged 17 and younger estimate MOE, 2010-2014 ACS	2	B09001	HD02_VD01		
E_DISABL	Civilian noninstitutionalized population with a disability estimate, 2010-2014 ACS	2	DP02	HC01_VC106		
M_DISABL	Civilian noninstitutionalized population with a disability estimate MOE, 2010-2014 ACS	2	DP02	HC02_VC106		
E_SNGPNT	Single parent household with children under 18 estimate, 2010-2014 ACS	2	DP02	HC01_VC09 + HC01_VC11	Estimate male householder, no wife present, family - With own children under 18 years + Estimate female householder, no husband present, family - With own children under 18 years	

2014 VARIABLE NAME	2014 DESCRIPTION	THEME	CENSUS or SVI TABLE(S)	TABLE FIELD CALCULATION	CALCULATION DESCRIPTION	NOTES
M_SNGPNT	Single parent household with children under 18 estimate MOE, 2010-2014 ACS	2	DP02	$\text{SQRT}(\text{HC02_VC09}^2 + \text{HC02_VC11}^2)$	SQRT (MOE male householder, no wife present, family - With own children under 18 years ^2 + Estimate female householder, no husband present, family - With own children under 18 years ^2)	
E_MINRTY	Minority (all persons except white, non-Hispanic) estimate, 2010-2014 ACS	3	B01001H	E_TOTPOP - HD01_VD01		
M_MINRTY	Minority (all persons except white, non-Hispanic) estimate MOE, 2010-2014 ACS	3	B01001H	$\text{SQRT}(\text{M_TOTPOP}^2 + \text{HD02_VD01}^2)$	SQRT (MOE total population ^2 - MOE white, non-Hispanic ^2)	

2014 VARIABLE NAME	2014 DESCRIPTION	THEME	CENSUS or SVI TABLE(S)	TABLE FIELD CALCULATION	CALCULATION DESCRIPTION	NOTES
E_LIMENG	Persons (age 5+) who speak English "less than well" estimate, 2010-2014 ACS	3	B16005	$\begin{aligned} & HD01_VD07 + HD01_VD08 + \\ & HD01_VD12 + HD01_VD13 + \\ & HD01_VD17 + HD01_VD18 + \\ & HD01_VD22 + HD01_VD23 + \\ & HD01_VD29 + HD01_VD30 + \\ & HD01_VD34 + HD01_VD35 + \\ & HD01_VD39 + HD01_VD40 + \\ & HD01_VD44 + HD01_VD45 \end{aligned}$	<p>Estimate; Native: - Speak Spanish: - Speak English "not well" + Estimate; Native: - Speak Spanish: - Speak English "not at all" + Estimate; Native: - Speak other Indo-European languages: - Speak English "not well" + Estimate; Native: - Speak other Indo-European languages: - Speak English "not at all" + Estimate; Native: - Speak Asian and Pacific Island languages: - Speak English "not well" + Estimate; Native: - Speak Asian and Pacific Island languages: - Speak English "not at all" + Estimate; Native: - Speak other languages: - Speak English "not well" + Estimate; Native: - Speak other languages: - Speak English "not at all" + Estimate; Foreign born: - Speak Spanish: - Speak English "not well" + Estimate; Foreign born: - Speak Spanish: - Speak English "not at all" + Estimate; Foreign born: - Speak other Indo-European languages: - Speak English "not well" + Estimate; Foreign born: - Speak other Indo-European languages: - Speak English "not at all" + Estimate; Foreign born: - Speak Asian and Pacific Island languages: - Speak English "not well" + Estimate; Foreign born: - Speak Asian and Pacific Island languages: - Speak English "not at all" + Estimate; Foreign born: - Speak other languages: - Speak English "not well" + Estimate; Foreign born: - Speak other languages: - Speak English "not at all"</p>	

2014 VARIABLE NAME	2014 DESCRIPTION	THEME	CENSUS or SVI TABLE(S)	TABLE FIELD CALCULATION	CALCULATION DESCRIPTION	NOTES
M_LIMENG	Persons (age 5+) who speak English "less than well" estimate MOE, 2010-2014 ACS	3	B16005	$\text{SQRT}(\text{HD02_VD07}^2 + \text{HD02_VD08}^2 + \text{HD02_VD12}^2 + \text{HD02_VD13}^2 + \text{HD02_VD17}^2 + \text{HD02_VD18}^2 + \text{HD02_VD22}^2 + \text{HD02_VD23}^2 + \text{HD02_VD29}^2 + \text{HD02_VD30}^2 + \text{HD02_VD34}^2 + \text{HD02_VD35}^2 + \text{HD02_VD39}^2 + \text{HD02_VD40}^2 + \text{HD02_VD44}^2 + \text{HD02_VD45}^2)$	<p>SQRT (MOE Native: - Speak Spanish: - Speak English "not well"^2 + MOE Native: - Speak Spanish: - Speak English "not at all"^2 + MOE Native: - Speak other Indo-European languages: - Speak English "not well"^2 + MOE Native: - Speak other Indo-European languages: - Speak English "not at all"^2 + MOE Native: - Speak Asian and Pacific Island languages: - Speak English "not well"^2 + MOE Native: - Speak Asian and Pacific Island languages: - Speak English "not at all"^2 + MOE Native: - Speak other languages: - Speak English "not well"^2 + MOE Native: - Speak other languages: - Speak English "not at all"^2 + MOE Foreign born: - Speak Spanish: - Speak English "not well"^2 + MOE Foreign born: - Speak Spanish: - Speak English "not at all"^2 + MOE Foreign born: - Speak other Indo-European languages: - Speak English "not well"^2 + MOE Foreign born: - Speak other Indo-European languages: - Speak English "not at all"^2 + MOE Foreign born: - Speak Asian and Pacific Island languages: - Speak English "not well"^2 + MOE Foreign born: - Speak Asian and Pacific Island languages: - Speak English "not at all"^2 + MOE Foreign born: - Speak other languages: - Speak English "not well"^2 + MOE Foreign born: - Speak other languages: - Speak English "not at all"^2)</p>	
E_MUNIT	Housing in structures with 10 or more units estimate, 2010-2014 ACS	4	DP04	HC01_VC19 + HC01_VC20	Estimate; UNITS IN STRUCTURE - Total housing units - 10 to 19 units + Estimate; UNITS IN STRUCTURE - Total housing units - 20 or more units	
M_MUNIT	Housing in structures with 10 or more units estimate MOE, 2010-2014 ACS	4	DP04	$\text{SQRT}(\text{HC02_VC19}^2 + \text{HC02_VC20}^2)$	SQRT (MOE UNITS IN STRUCTURE - Total housing units - 10 to 19 units^2 + MOE; UNITS IN STRUCTURE - Total housing units - 20 or more units^2)	

2014 VARIABLE NAME	2014 DESCRIPTION	THEME	CENSUS or SVI TABLE(S)	TABLE FIELD CALCULATION	CALCULATION DESCRIPTION	NOTES
E_MOBILE	Mobile homes estimate, 2010-2014 ACS	4	DP04	HC01_VC21		
M_MOBILE	Mobile homes estimate MOE, 2010-2014 ACS	4	DP04	HC02_VC21		
E_CROWD	At household level (occupied housing units), more people than rooms estimate, 2010-2014 ACS	4	DP04	HC01_VC113 + HC01_VC114	Estimate; OCCUPANTS PER ROOM - Occupied housing units - 1.01 to 1.50 + Estimate; OCCUPANTS PER ROOM - Occupied housing units - 1.51 or more	
M_CROWD	At household level (occupied housing units), more people than rooms estimate MOE, 2010-2014 ACS	4	DP04	$\text{SQRT}(\text{HC02_VC113}^2 + \text{HC02_VC114}^2)$	$\text{SQRT}(\text{MOE OCCUPANTS PER ROOM - Occupied housing units - 1.01 to 1.50}^2 + \text{MOE OCCUPANTS PER ROOM - Occupied housing units - 1.51 or more}^2)$	
E_NOVEH	Households with no vehicle available estimate, 2010-2014 ACS	4	DP04	HC01_VC84		
M_NOVEH	Households with no vehicle available estimate MOE, 2010-2014 ACS	4	DP04	HC02_VC84		
E_GROUPQ	Persons in institutionalized and noninstitutionalized group quarters estimate, 2010-2014 ACS	4	B26001	HD01_VD01		

2014 VARIABLE NAME	2014 DESCRIPTION	THEME	CENSUS or SVI TABLE(S)	TABLE FIELD CALCULATION	CALCULATION DESCRIPTION	NOTES
M_GROUPQ	Persons in institutionalized and noninstitutionalized group quarters estimate MOE, 2010-2014 ACS	4	B26001	HD02_VD01		
EP_POV	Percentage of persons below poverty estimate	1	S0601	HC01_EST_VC67		
MP_POV	Percentage of persons below poverty estimate MOE	1	S0601	HC01_MOE_VC67		
EP_UNEMP	Percentage of civilian (age 16+) unemployed estimate	1	DP03	HC03_VC12		
MP_UNEMP	Percentage of civilian (age 16+) unemployed estimate MOE	1	DP03	HC04_VC12		
EP_PCI	Per capita income estimate, 2010-2014 ACS	1	B19301	HD01_VD01		Value is the same as E_PCI
MP_PCI	Per capita income estimate MOE, 2010-2014 ACS	1	B19301	HD02_VD01		Value is the same as M_PCI
EP_NOHSDP	Percentage of persons with no high school diploma (age 25+) estimate	1	S0601	HC01_EST_VC46		

2014 VARIABLE NAME	2014 DESCRIPTION	THEME	CENSUS or SVI TABLE(S)	TABLE FIELD CALCULATION	CALCULATION DESCRIPTION	NOTES
MP_NOHSDP	Percentage of persons with no high school diploma (25+) estimate MOE	1	S0601	HC01_MOE_VC46		
EP_AGE65	Percentage of persons aged 65 and older estimate, 2010-2014 ACS	2	S0101	HC01_EST_VC31		
MP_AGE65	Percentage of persons aged 65 and older estimate MOE, 2010-2014 ACS	2	S0101	HC01_MOE_VC31		
EP_AGE17	Percentage of persons aged 17 and younger estimate, 2010-2014 ACS	2	SVI	$(E_AGE17 / E_TOTPOP) * 100$	(Persons aged 17 and younger estimate / Total population estimate) * 100	This calculation resulted in some division by 0 errors in cases where E_TOTPOP equals 0. These rows were revised with the estimated proportions set to 0 and their corresponding MOEs set to -999.
MP_AGE17	Percentage of persons aged 17 and younger estimate MOE, 2010-2014 ACS	2	SVI	$((\text{SQRT}(M_AGE17^2 - ((EP_AGE17/100)^2 * M_TOTPOP^2)))/E_TOTPOP) * 100$	$((\text{SQRT}(\text{MOE Population under 18 years}^2 - (\text{Estimated proportion of persons aged 17 and younger}^2 * \text{MOE Total Population}^2)))) / \text{Total population estimate} * 100$	Two MOE calculations resulted in errors because the value under the square root was negative. For these rows, as the Census Bureau suggests, we used the formula for derived ratios, as opposed to that for derived proportions. Instead of the subtraction in the standard formula, we add. See <i>A Compass for Understanding and Using American Community Survey Data</i> , page A-15 (https://www.census.gov/content/dam/Census/library/publications/2008/acs/ACSGeneralHandbook.pdf).

2014 VARIABLE NAME	2014 DESCRIPTION	THEME	CENSUS or SVI TABLE(S)	TABLE FIELD CALCULATION	CALCULATION DESCRIPTION	NOTES
EP_DISABL	Percentage of civilian noninstitutionalized population with a disability estimate, 2010-2014 ACS	2	DP02	HC03_VC106		
MP_DISABL	Percentage of civilian noninstitutionalized population with a disability estimate MOE, 2010-2014 ACS	2	DP02	HC04_VC106		
EP_SNGPNT	Percentage of single parent households with children under 18 estimate, 2010-2014 ACS	2	SVI	$(E_SNGPNT / E_HH) * 100$	(Single parent household with children under 18 estimate / Households estimate) * 100	This calculation resulted in some division by 0 errors in cases where E_HH equals 0. These rows were revised with the estimated proportions set to 0 and their corresponding MOEs set to -999.
MP_SNGPNT	Percentage of single parent households with children under 18 estimate MOE, 2010-2014 ACS	2	SVI	$((\text{SQRT}(M_SNGPNT^2 - ((EP_SNGPNT/100)^2 * M_HH^2)))/E_HH) * 100$	$((\text{SQRT}(\text{MOE Single parent households}^2 - (\text{Estimated proportion single parent households}^2 * \text{MOE Households}^2))) / \text{Households estimate}) * 100$	Two MOE calculations resulted in errors because the value under the square root was negative. For these rows, as the Census Bureau suggests, we used the formula for derived ratios, as opposed to that for derived proportions. Instead of the subtraction in the standard formula, we add. See <i>A Compass for Understanding and Using American Community Survey Data</i> , page A-15 (https://www.census.gov/content/dam/Census/library/publications/2008/acs/ACSGlobalHandbook.pdf).

2014 VARIABLE NAME	2014 DESCRIPTION	THEME	CENSUS or SVI TABLE(S)	TABLE FIELD CALCULATION	CALCULATION DESCRIPTION	NOTES
EP_MINRTY	Percentage minority (all persons except white, non-Hispanic) estimate, 2010-2014 ACS	3	SVI	$(E_MINRTY/E_TOTPOP)*100$	(Minority estimate / Total population estimate) * 100	This calculation resulted in some division by 0 errors in cases where E_HH equals 0. These rows were revised with the estimated proportions set to 0 and their corresponding MOEs set to -999.
MP_MINRTY	Percentage minority (all persons except white, non-Hispanic) estimate MOE, 2010-2014 ACS	3	SVI	$((SQRT(M_MINRTY^2 - ((EP_MINRTY/100)^2 * M_TOTPOP^2)))/E_TOTPOP)*100$	$((SQRT(MOE\ Minority^2 - (Estimated\ proportion\ minority^2 * MOE\ Total\ population^2))) / Total\ population\ estimate) * 100$	
EP_LIMENG	Percentage of persons (age 5+) who speak English "less than well" estimate, 2010-2014 ACS	3	SVI and B16005	$(E_LIMENG/HD01_VD01)*100$	(Persons who speak English "less than well" estimate / Population age 5 and over estimate) * 100	This calculation resulted in some division by 0 errors in cases where total population age 5 and over equals 0. These rows were revised with the estimated proportions set to 0 and their corresponding MOEs set to -999.
MP_LIMENG	Percentage of persons (age 5+) who speak English "less than well" estimate MOE, 2010-2014 ACS	3	SVI and B16005	$((SQRT(M_LIMENG^2 - ((EP_LIMENG/100)^2 * HD01_VD01^2)))/HD01_VD01)*100$	$((SQRT(MOE\ Persons\ who\ speak\ English\ less\ than\ well^2 - (Estimated\ proportion\ persons\ who\ speak\ English\ less\ than\ well^2 * MOE\ population\ age\ 5\ and\ over^2))) / Population\ age\ 5\ and\ over\ estimate) * 100$	Two MOE calculations resulted in errors because the value under the square root was negative. For these rows, as the Census Bureau suggests, we used the formula for derived ratios, as opposed to that for derived proportions. Instead of the subtraction in the standard formula, we add. See <i>A Compass for Understanding and Using American Community Survey Data</i> , page A-15 (https://www.census.gov/content/dam/Census/library/publications/2008/acs/ACSGeneralHandbook.pdf).

2014 VARIABLE NAME	2014 DESCRIPTION	THEME	CENSUS or SVI TABLE(S)	TABLE FIELD CALCULATION	CALCULATION DESCRIPTION	NOTES
EP_MUNIT	Percentage of housing in structures with 10 or more units estimate	4	SVI	$(E_MUNIT/E_HU)*100$	(Housing in structures with 10 or more units estimate / Housing units estimate)*100	This calculation resulted in some division by 0 errors in cases where E_HU equals 0. These rows were revised with the estimated proportions set to 0 and their corresponding MOEs set to -999.
MP_MUNIT	Percentage of housing in structures with 10 or more units estimate MOE	4	SVI	$((SQRT(M_MUNIT^2 - ((EP_MUNIT/100)^2 * M_HU^2)))/E_HU)*100$	$((SQRT(MOE Housing in structures with 10 or more units^2 - (Estimated proportion housing in structures with 10 or more units^2 * MOE Housing units^2))) / Housing units estimate) * 100$	Two MOE calculations resulted in errors because the value under the square root was negative. For these rows, as the Census Bureau suggests, we used the formula for derived ratios, as opposed to that for derived proportions. Instead of the subtraction in the standard formula, we add. See <i>A Compass for Understanding and Using American Community Survey Data</i> , page A-15 (https://www.census.gov/content/dam/Census/library/publications/2008/acs/ACSGeneralHandbook.pdf).
EP_MOBILE	Percentage of mobile homes estimate	4	DP04	HC03_VC21		
MP_MOBILE	Percentage of mobile homes estimate MOE	4	DP04	HC04_VC21		

2014 VARIABLE NAME	2014 DESCRIPTION	THEME	CENSUS or SVI TABLE(S)	TABLE FIELD CALCULATION	CALCULATION DESCRIPTION	NOTES
EP_CROWD	Percentage of occupied housing units with more people than rooms estimate	4	SVI and DP04	$(E_CROWD / HC01_VC04) * 100$	(Occupied housing units with more people than rooms estimate / Occupied housing units estimate)*100	This calculation resulted in some division by 0 errors in cases where HC01_VC04 equals 0. These rows were revised with the estimated proportions set to 0 and their corresponding MOEs set to -999.
MP_CROWD	Percentage of occupied housing units with more people than rooms estimate MOE	4	SVI and DP04	$((SQRT(M_CROWD^2 - ((EP_CROWD/100)^2 * HC02_VC04^2)))/HC01_VC04) * 100$	$((SQRT(MOE\ Occupied\ housing\ units\ with\ more\ people\ than\ rooms^2 - (Estimated\ proportion\ of\ occupied\ housing\ units\ with\ more\ people\ than\ rooms^2 * MOE\ Occupied\ housing\ units^2)) / Occupied\ housing\ units\ estimate) * 100$	Two MOE calculations resulted in errors because the value under the square root was negative. For these rows, as the Census Bureau suggests, we used the formula for derived ratios, as opposed to that for derived proportions. Instead of the subtraction in the standard formula, we add. See <i>A Compass for Understanding and Using American Community Survey Data</i> , page A-15 (https://www.census.gov/content/dam/Census/library/publications/2008/acs/ACSGeneralHandbook.pdf).
EP_NOVEH	Percentage of households with no vehicle available estimate	4	DP04	HC03_VC84		
MP_NOVEH	Percentage of households with no vehicle available estimate MOE	4	DP04	HC04_VC84		

2014 VARIABLE NAME	2014 DESCRIPTION	THEME	CENSUS or SVI TABLE(S)	TABLE FIELD CALCULATION	CALCULATION DESCRIPTION	NOTES
EP_GROUPQ	Percentage of persons in institutionalized and noninstitutionalized group quarters estimate, 2010-2014 ACS	4	SVI	$(E_GROUPQ/E_TOTPOP)*100$	(Persons in group quarters estimate / Total population estimate) * 100	This calculation resulted in some division by 0 errors in cases where E_TOTPOP equals 0. These rows were revised with the estimated proportions set to 0 and their corresponding MOEs set to -999.
MP_GROUPQ	Percentage of persons in institutionalized and noninstitutionalized group quarters estimate MOE, 2010-2014 ACS	4	SVI	$((SQRT(M_GROUPQ^2 - ((EP_GROUPQ/100)^2 * M_TOTPOP^2)))/E_TOTPOP)*100$	$((SQRT(MOE\ Persons\ in\ group\ quarters^2 - (Estimated\ proportion\ persons\ in\ group\ quarters^2 * MOE\ Total\ population^2))) / Total\ population\ estimate) * 100$	66 MOE calculations resulted in errors because the value under the square root was negative. For these rows, as the Census Bureau suggests, we used the formula for derived ratios, as opposed to that for derived proportions. Instead of the subtraction in the standard formula, we add. See <i>A Compass for Understanding and Using American Community Survey Data</i> , page A-15 (https://www.census.gov/content/dam/Census/library/publications/2008/acs/ACSGeneralHandbook.pdf).
EPL_POV	Percentile Percentage of persons below poverty estimate	1	SVI	In Excel: PERCENTRANK.INC on EP_POV array with 4 significant digits		
EPL_UNEMP	Percentile Percentage of civilian (age 16+) unemployed estimate	1	SVI	In Excel: PERCENTRANK.INC on EP_UNEMP array with 4 significant digits		

2014 VARIABLE NAME	2014 DESCRIPTION	THEME	CENSUS or SVI TABLE(S)	TABLE FIELD CALCULATION	CALCULATION DESCRIPTION	NOTES
EPL_PCI	Percentile per capita income estimate	1	SVI	In Excel: 1-(PERCENTRANK.INC on EP_PCI array with 4 significant digits)		Per capita income necessarily reversed as high income equates with low vulnerability and vice versa. Null values (-999) removed from the array before calculating output percentile ranks. Output for -999 input cells set to -999.
EPL_NOHSDP	Percentile Percentage of persons with no high school diploma (age 25+) estimate	1	SVI	In Excel: PERCENTRANK.INC on EP_NOHSDP array with 4 significant digits		
SPL_THEME1	Sum of series for Socioeconomic theme	1	SVI	EPL_POV + EPL_UNEMP + EPL_PCI + EPL_NOHSDP		Null values (-999) removed before calculating output sum. Output for sums with null values in the same row set to -999.
RPL_THEME1	Percentile ranking for Socioeconomic theme summary	1	SVI	In Excel: PERCENTRANK.INC on SPL_THEME1 array with 4 significant digits		Null values (-999) removed from the array before calculating output percentile ranks. Output for -999 input cells set to -999.
EPL_AGE65	Percentile percentage of persons aged 65 and older estimate	2	SVI	In Excel: PERCENTRANK.INC on EP_AGE65 array with 4 significant digits		
EPL_AGE17	Percentile percentage of persons aged 17 and younger estimate	2	SVI	In Excel: PERCENTRANK.INC on EP_AGE17 array with 4 significant digits		
EPL_DISABL	Percentile percentage of civilian noninstitutionalized population with a disability estimate	2	SVI	In Excel: PERCENTRANK.INC on EP_DISABL array with 4 significant digits		

2014 VARIABLE NAME	2014 DESCRIPTION	THEME	CENSUS or SVI TABLE(S)	TABLE FIELD CALCULATION	CALCULATION DESCRIPTION	NOTES
EPL_SNGPNT	Percentile percentage of single parent households with children under 18 estimate	2	SVI	In Excel: PERCENTRANK.INC on EP_SNGPNT array with 4 significant digits		
SPL_THEME2	Sum of series for Household Composition theme	2	SVI	EPL_AGE65 + EPL_AGE17 + EPL_DISABL + EPL_SNGPNT		
RPL_THEME2	Percentile ranking for Household Composition theme summary	2	SVI	In Excel: PERCENTRANK.INC on SPL_THEME2 array with 4 significant digits		
EPL_MINRTY	Percentile percentage minority (all persons except white, non-Hispanic) estimate	3	SVI	In Excel: PERCENTRANK.INC on EP_MINRTY array with 4 significant digits		
EPL_LIMENG	Percentile percentage of persons (age 5+) who speak English "less than well" estimate	3	SVI	In Excel: PERCENTRANK.INC on EP_LIMENG array with 4 significant digits		
SPL_THEME3	Sum of series for Minority Status/Language theme	3	SVI	EPL_MINRTY + EPL_LIMENG		
RPL_THEME3	Percentile ranking for Minority Status/Language theme	3	SVI	In Excel: PERCENTRANK.INC on SPL_THEME3 array with 4 significant digits		

2014 VARIABLE NAME	2014 DESCRIPTION	THEME	CENSUS or SVI TABLE(S)	TABLE FIELD CALCULATION	CALCULATION DESCRIPTION	NOTES
EPL_MUNIT	Percentile percentage housing in structures with 10 or more units estimate	4	SVI	In Excel: PERCENTRANK.INC on EP_MUNIT array with 4 significant digits		
EPL_MOBILE	Percentile percentage mobile homes estimate	4	SVI	In Excel: PERCENTRANK.INC on EP_MOBILE array with 4 significant digits		
EPL_CROWD	Percentile percentage households with more people than rooms estimate	4	SVI	In Excel: PERCENTRANK.INC on EP_CROWD array with 4 significant digits		
EPL_NOVEH	Percentile percentage households with no vehicle available estimate	4	SVI	In Excel: PERCENTRANK.INC on EP_NOVEH array with 4 significant digits		
EPL_GROUPQ	Percentile percentage of persons in institutionalized and noninstitutionalized group quarters estimate	4	SVI	In Excel: PERCENTRANK.INC on EP_GROUPQ array with 4 significant digits		
SPL_THEME4	Sum of series for Housing/Transportation theme	4	SVI	EPL_MUNIT + EPL_MOBIL + EPL_CROWD + EPL_NOVEH + EPL_GROUPQ		
RPL_THEME4	Percentile ranking for Housing/Transportation theme	4	SVI	In Excel: PERCENTRANK.INC on SPL_THEME4 array with 4 significant digits		

2014 VARIABLE NAME	2014 DESCRIPTION	THEME	CENSUS or SVI TABLE(S)	TABLE FIELD CALCULATION	CALCULATION DESCRIPTION	NOTES
SPL_THEMES	Sum of series themes		SVI	SPL_THEME1 + SPL_THEME2 + SPL_THEME3 + SPL_THEME4		Null values (-999) removed before calculating output sum. Output for sums with null values in the same row set to -999.
RPL_THEMES	Overall percentile ranking		SVI	In Excel: PERCENTRANK.INC on SPL_THEMES array with 4 significant digits		Null values (-999) removed from the array before calculating output percentile ranks. Output for -999 input cells set to -999.
F_POV	Flag -the percentage of persons in poverty is in the 90th percentile (1 = yes, 0 = no)	1	SVI	EPL_POV >= 0.90		
F_UNEMP	Flag -the percentage of civilian unemployed is in the 90th percentile (1 = yes, 0 = no)	1	SVI	EPL_UNEMP >= 0.90		
F_PCI	Flag -per capita income is in the 90th percentile (1 = yes, 0 = no)	1	SVI	EPL_PCI >= 0.90		Output for -999 input cells set to -999.
F_NOHSDP	Flag -the percentage of persons with no high school diploma is in the 90th percentile (1 = yes, 0 = no)	1	SVI	EPL_NOHSDIP >= 0.90		
F_THEME1	Sum of flags for Socioeconomic Status theme	1	SVI	F_POV + F_UNEMP + F_PCI + F_NOHSDP		Null values (-999) removed before calculating output sum. Output for sums with null values in the same row set to -999.

2014 VARIABLE NAME	2014 DESCRIPTION	THEME	CENSUS or SVI TABLE(S)	TABLE FIELD CALCULATION	CALCULATION DESCRIPTION	NOTES
F_AGE65	Flag - the percentage of persons aged 65 and older is in the 90th percentile (1 = yes, 0 = no)	2	SVI	EPL_AGE65 >= 0.90		
F_AGE17	Flag - the percentage of persons aged 17 and younger is in the 90th percentile (1 = yes, 0 = no)	2	SVI	EPL_AGE17 >= 0.90		
F_DISABL	Flag - the percentage of persons with a disability is in the 90th percentile (1 = yes, 0 = no)	2	SVI	EPL_DISABL >= 0.90		
F_SNGPNT	Flag - the percentage of single parent households is in the 90th percentile (1 = yes, 0 = no)	2	SVI	EPL_SNGPNT >= 0.90		
F_THEME2	Sum of flags for Household Composition theme	2	SVI	F_AGE65 + F_AGE17 + F_DISABL + F_SNGPNT		
F_MINRTY	Flag - the percentage of minority is in the 90th percentile (1 = yes, 0 = no)	3	SVI	EPL_MINRTY >= 0.90		
F_LIMENG	Flag - the percentage those with limited English is in the 90th percentile (1 = yes, 0 = no)	3	SVI	EPL_LIMENG >= 0.90		

2014 VARIABLE NAME	2014 DESCRIPTION	THEME	CENSUS or SVI TABLE(S)	TABLE FIELD CALCULATION	CALCULATION DESCRIPTION	NOTES
F_THEME3	Sum of flags for Minority Status/Language theme	3	SVI	F_MINRTY + F_LIMENG		
F_MUNIT	Flag - the percentage of households in multi-unit housing is in the 90th percentile (1 = yes, 0 = no)	4	SVI	EPL_MUNIT >= 0.90		
F_MOBILE	Flag - the percentage of mobile homes is in the 90th percentile (1 = yes, 0 = no)	4	SVI	EPL_MOBILE >= 0.90		
F_CROWD	Flag - the percentage of crowded households is in the 90th percentile (1 = yes, 0 = no)	4	SVI	EPL_CROWD >= 0.90		
F_NOVEH	Flag - the percentage of households with no vehicles is in the 90th percentile (1 = yes, 0 = no)	4	SVI	EPL_NOVEH >= 0.90		
F_GROUPQ	Flag - the percentage of persons in institutionalized and noninstitutionalized group quarters is in the 90th percentile (1 = yes, 0 = no)	4	SVI	EPL_GROUPQ >= 0.90		

2014 VARIABLE NAME	2014 DESCRIPTION	THEME	CENSUS or SVI TABLE(S)	TABLE FIELD CALCULATION	CALCULATION DESCRIPTION	NOTES
F_THEME4	Sum of flags for Housing/Transportation theme	4	SVI	F_MUNIT + F_MOBILE + F_CROWD + F_NOVEH + F_GROUPQ		
F_TOTAL	Sum of flags for the four themes	4	SVI	F_THEME1 + F_THEME2 + F_THEME3 + F_THEME4		Null values (-999) removed before calculating output sum. Output for sums with null values in the same row set to -999.
E_UNINSUR	Adjunct variable - Uninsured in the total civilian noninstitutionalized population estimate, 2010-2014 ACS		S2701	HC02_EST_VC01		
M_UNINSUR	Adjunct variable - Uninsured in the total civilian noninstitutionalized population estimate MOE, 2010-2014 ACS		S2701	HC02_MOE_VC01		
EP_UNINSUR	Adjunct variable - Percentage uninsured in the total civilian noninstitutionalized population estimate, 2010-2014 ACS		S2701	HC03_EST_VC01		
MP_UNINSUR	Adjunct variable - Percentage uninsured in the total civilian noninstitutionalized population estimate MOE, 2010-2014 ACS		S2701	HC03_MOE_VC01		

SVI 2014 – SVI 2010 Crosswalk

Themes
1. Socioeconomic
2. Household Composition/Disability
3. Minority Status/Language
4. Housing Type/Transportation

Variables beginning with “E_” are estimates. Variables beginning with “M_” are margins of error for those estimates. Values of -999 represent “null” or “no data.”

All variables for CDC SVI 2014 came from ACS 2010-2014.

The blue text with a ‘*’ after indicates CDC SVI 2010 data from the 2010 decennial census.

American Community Survey field names that changed between 2010 and 2014 are marked ‘Yes’ or ‘No’ in the ‘Field Name Changed Since 2014?’ column.

2014 DESCRIPTION	2014 VARIABLE NAME	THEME	FIELD NAME CHANGED SINCE 2010?	2010 VARIABLE NAME	2010 DESCRIPTION	FIELD NAME CHANGED SINCE 2000?
State abbreviation	ST		No	ST	State Abbreviation	No
State name	STATE		No	STATE	State Name	No
County-level FIPS code	STCNTY		No	N/A*		No
Tract-level FIPS code	FIPS		No	FIPS	Tract-level FIPS	No
Text description of tract, county, state	LOCATION		No	LOCATION	Text description of tract, county, state	No
Tract area in square miles	AREA_SQMI		No	CENSUSAREA	Tract area in square miles	No
	N/A*		Yes	TOTPOP*	Total population, 2010 SF1*	Yes
Population estimate, 2010-2014 ACS	E_TOTPOP		No	E_TOTPOP	Population estimate, 2006-2010 ACS	No
Population estimate MOE, 2010-2014 ACS	M_TOTPOP		No	M_TOTPOP	Population estimate MOE, 2006-2010 ACS	No
	N/A*		Yes	HU*	Housing units, 2010 SF1*	Yes
Housing units estimate, 2010-2014 ACS	E_HU		No	E_HU	Housing units estimate, 2006-2010 ACS	No
Housing units estimate MOE, 2010-2014 ACS	M_HU		No	M_HU	Housing units estimate MOE, 2006-2010 ACS	No
Households estimate, 2010-2014 ACS	E_HH		No	N/A*		Yes

2014 DESCRIPTION	2014 VARIABLE NAME	THEME	FIELD NAME CHANGED SINCE 2010?	2010 VARIABLE NAME	2010 DESCRIPTION	FIELD NAME CHANGED SINCE 2000?
Households estimate MOE, 2010-2014 ACS	M_HH		No	N/A*		Yes
	N/A*		Yes	HH*	Number of households, 2010 SF1*	Yes
Persons below poverty estimate, 2010-2014 ACS	E_POV	1	No	E_POV	Persons below poverty estimate, 2006-2010 ACS	No
Persons below poverty estimate MOE, 2010-2014 ACS	M_POV	1	No	M_POV	Persons below poverty estimate MOE, 2006-2010 ACS	No
Civilian (age 16+) unemployed estimate, 2010-2014 ACS	E_UNEMP	1	No	E_UNEMP	Civilian (age 16+) unemployed estimate, 2006-2010 ACS	No
Civilian (age 16+) unemployed estimate MOE, 2010-2014 ACS	M_UNEMP	1	No	M_UNEMP	Civilian (age 16+) unemployed estimate MOE, 2006-2010 ACS	No
Per capita income estimate, 2010-2014 ACS	E_PCI	1	No	E_PCI	Per capita income estimate, 2006-2010 ACS	No
Per capita income estimate MOE, 2010-2014 ACS	M_PCI	1	No	M_PCI	Per capita income estimate MOE, 2006-2010 ACS	No
Persons (age 25+) with no high school diploma estimate, 2010-2014 ACS	E_NOHSDP	1	No	E_NOHSDIP	Persons (age 25+) with no high school diploma estimate, 2006-2010 ACS	No
Persons (age 25+) with no high school diploma estimate MOE, 2010-2014 ACS	M_NOHSDP	1	No	M_NOHSDIP	Persons (age 25+) with no high school diploma estimate MOE, 2006-2010 ACS	No
	N/A*	2	Yes	AGE65*	Persons aged 65 and older, 2010 SF1*	Yes
	N/A*	2	Yes	AGE17*	Persons aged 17 and younger, 2010 SF1*	Yes
	N/A*	2	Yes	SNGPRNT*	Single parent household with children under 18, 2010 SF1*	Yes
Persons aged 65 and older estimate, 2010-2014 ACS	E_AGE65	2	No	N/A*		Yes
Persons aged 65 and older estimate MOE, 2010-2014 ACS	M_AGE65	2	No	N/A*		Yes

2014 DESCRIPTION	2014 VARIABLE NAME	THEME	FIELD NAME CHANGED SINCE 2010?	2010 VARIABLE NAME	2010 DESCRIPTION	FIELD NAME CHANGED SINCE 2000?
Persons aged 17 and younger estimate, 2010-2014 ACS	E_AGE17	2	No	N/A*		Yes
Persons aged 17 and younger estimate MOE, 2010-2014 ACS	M_AGE17	2	No	N/A*		Yes
Civilian noninstitutionalized population with a disability estimate, 2010-2014 ACS	E_DISABL	2	No	N/A*		Yes
Civilian noninstitutionalized population with a disability estimate MOE, 2010-2014 ACS	M_DISABL	2	No	N/A*		Yes
Single parent household with children under 18 estimate, 2010-2014 ACS	E_SNGPNT	2	No	N/A*		Yes
Single parent household with children under 18 estimate MOE, 2010-2014 ACS	M_SNGPNT	2	No	N/A*		Yes
	N/A*	3	Yes	MINORITY*	Minority (all persons except white, non-Hispanic), 2010 SF1*	Yes
Minority (all persons except white, non-Hispanic) estimate, 2010-2014 ACS	E_MINRTY	3	No	N/A*		Yes
Minority (all persons except white, non-Hispanic) estimate MOE, 2010-2014 ACS	E_MINRTY	3	No	N/A*		Yes
Persons (age 5+) who speak English "less than	E_LIMENG	3	No	E_LIMENG	Persons (age 5+) who speak English "less than well" estimate, 2006-2010 ACS	No

2014 DESCRIPTION	2014 VARIABLE NAME	THEME	FIELD NAME CHANGED SINCE 2010?	2010 VARIABLE NAME	2010 DESCRIPTION	FIELD NAME CHANGED SINCE 2000?
well" estimate, 2010-2014 ACS						
Persons (age 5+) who speak English "less than well" estimate MOE, 2010-2014 ACS	M_LIMENG	3	No	M_LIMENG	Persons (age 5+) who speak English "less than well" estimate MOE, 2006-2010 ACS	No
Housing in structures with 10 or more units estimate, 2010-2014 ACS	E_MUNIT	4	No	E_MUNIT	Housing in structures with 10 or more units estimate, 2006-2010 ACS	No
Housing in structures with 10 or more units estimate MOE, 2010-2014 ACS	M_MUNIT	4	No	M_MUNIT	Housing in structures with 10 or more units estimate MOE, 2006-2010 ACS	No
Mobile homes estimate, 2010-2014 ACS	E_MOBILE	4	No	E_MOBILE	Mobile homes estimate, 2006-2010 ACS	No
Mobile homes estimate MOE, 2010-2014 ACS	M_MOBILE	4	No	M_MOBILE	Mobile homes estimate MOE, 2006-2010 ACS	No
At household level, more people than rooms estimate, 2010-2014 ACS	E_CROWD	4	No	E_CROWD	At household level, more people than rooms estimate, 2006-2010 ACS	No
At household level, more people than rooms estimate MOE, 2010-2014 ACS	M_CROWD	4	No	M_CROWD	At household level, more people than rooms estimate MOE, 2006-2010 ACS	No
Households with no vehicle available estimate, 2010-2014 ACS	E_NOVEH	4	No	E_NOVEH	Households with no vehicle available estimate, 2006-2010 ACS	No
Households with no vehicle available estimate MOE, 2010-2014 ACS	M_NOVEH	4	No	M_NOVEH	Households with no vehicle available estimate MOE, 2006-2010 ACS	No
	N/A*	4	Yes	GROUPQ	Persons in institutionalized and noninstitutionalized group quarters, 2010 SF1	No
Persons in institutionalized and noninstitutionalized group quarters estimate, 2010-2014 ACS	E_GROUPQ		No	N/A*		Yes

2014 DESCRIPTION	2014 VARIABLE NAME	THEME	FIELD NAME CHANGED SINCE 2010?	2010 VARIABLE NAME	2010 DESCRIPTION	FIELD NAME CHANGED SINCE 2000?
Persons in institutionalized group quarters estimate MOE, 2010-2014 ACS	M_GROUPQ	4	No	N/A*		Yes
Percentage of persons below poverty estimate	EP_POV	1	No	E_P_POV	Proportion of persons below poverty estimate	No
Percentage of persons below poverty estimate MOE	MP_POV	1	No	M_P_POV	Proportion of persons below poverty estimate MOE	No
Percentage of civilian (age 16+) unemployed estimate	EP_UNEMP	1	No	E_P_UNEMP	Proportion of civilian (age 16+) unemployed estimate	No
Percentage of civilian (age 16+) unemployed estimate MOE	MP_UNEMP	1	No	M_P_UNEMP	Proportion of civilian (age 16+) unemployed estimate MOE	No
Per capita income estimate, 2010-2014 ACS	EP_PCI	1	No	E_P_PCI	Per capita income estimate, 2006-2010 ACS	No
Per capita income estimate MOE, 2010-2014 ACS	MP_PCI	1	No	M_P_PCI	Per capita income estimate MOE, 2006-2010 ACS	No
Percentage of persons with no high school diploma (age 25+) estimate	EP_NOHSDP	1	No	E_P_NOHSDIP	Proportion of persons with no high school diploma (age 25+) estimate	No
Percentage of persons with no high school diploma (25+) estimate MOE	MP_NOHSDP	1	No	M_P_NOHSDIP	Proportion of persons with no high school diploma (25+) estimate MOE	No
	N/A*	2	Yes	P_AGE65	Proportion of persons aged 65 and older	No
	N/A*	2	Yes	P_AGE17	Proportion of persons aged 17 and younger	No
	N/A*	2	Yes	P_SNGPRNT	Proportion of single parent households with children under 18	No
Percentage of persons aged 65 and older estimate, 2010-2014 ACS	EP_AGE65	2	No	N/A*		Yes

2014 DESCRIPTION	2014 VARIABLE NAME	THEME	FIELD NAME CHANGED SINCE 2010?	2010 VARIABLE NAME	2010 DESCRIPTION	FIELD NAME CHANGED SINCE 2000?
Percentage of persons aged 65 and older estimate MOE, 2010-2014 ACS	MP_AGE65	2	No	N/A*		Yes
Percentage of persons aged 17 and younger estimate, 2010-2014 ACS	EP_AGE17	2	No	N/A*		Yes
Percentage of persons aged 17 and younger estimate MOE, 2010-2014 ACS	MP_AGE17	2	No	N/A*		Yes
Percentage of civilian noninstitutionalized population with a disability estimate, 2010-2014 ACS	EP_DISABL	2	No	N/A*		Yes
Percentage of civilian noninstitutionalized population with a disability estimate MOE, 2010-2014 ACS	MP_DISABL	2	No	N/A		Yes
Percentage of single parent households with children under 18 estimate, 2010-2014 ACS	EP_SNGPNT	2	No	N/A*		Yes
Percentage of single parent households with children under 18 estimate MOE, 2010-2014 ACS	MP_SNGPNT	2	No	N/A*		Yes
	N/A*	3	Yes	P_MINORITY	Proportion minority (all persons except white, non-Hispanic)	No
Percentage minority (all persons except white, non-Hispanic) estimate, 2010-2014 ACS	EP_MINRTY	3	No	N/A*		Yes

2014 DESCRIPTION	2014 VARIABLE NAME	THEME	FIELD NAME CHANGED SINCE 2010?	2010 VARIABLE NAME	2010 DESCRIPTION	FIELD NAME CHANGED SINCE 2000?
Percentage minority (all persons except white, non-Hispanic) estimate MOE, 2010-2014 ACS	MP_MINRTY	3	No	N/A*		Yes
Percentage of persons (age 5+) who speak English "less than well" estimate, 2010-2014 ACS	EP_LIMENG	3	No	E_P_LIMENG	Proportion of persons (age 5+) who speak English "less than well" estimate	No
Percentage of persons (age 5+) who speak English "less than well" estimate MOE, 2010-2014 ACS	MP_LIMENG	3	No	M_P_LIMENG	Proportion of persons (age 5+) who speak English "less than well" estimate MOE	No
Percentage of housing in structures with 10 or more units estimate	EP_MUNIT	4	No	E_P_MUNIT	Proportion of housing in structures with 10 or more units estimate	No
Percentage of housing in structures with 10 or more units estimate MOE	MP_MUNIT	4	No	M_P_MUNIT	Proportion of housing in structures with 10 or more units estimate MOE	No
Percentage of mobile homes estimate	EP_MOBILE	4	No	E_P_MOBILE	Proportion of mobile homes estimate	No
Percentage of mobile homes estimate MOE	MP_MOBILE	4	No	M_P_MOBILE	Proportion of mobile homes estimate MOE	No
Percentage of households with more people than rooms estimate	EP_CROWD	4	No	E_P_CROWD	Proportion of households with more people than rooms estimate	No
Percentage of households with more people than rooms estimate MOE	MP_CROWD	4	No	M_P_CROWD	Proportion of households with more people than rooms estimate MOE	No
Percentage of households with no vehicle available estimate	EP_NOVEH	4	No	E_P_NOVEH	Proportion of households with no vehicle available estimate	No
Percentage of households with no vehicle available estimate MOE	MP_NOVEH	4	No	M_P_NOVEH	Proportion of households with no vehicle available estimate MOE	No

2014 DESCRIPTION	2014 VARIABLE NAME	THEME	FIELD NAME CHANGED SINCE 2010?	2010 VARIABLE NAME	2010 DESCRIPTION	FIELD NAME CHANGED SINCE 2000?
Percentage of persons in institutionalized and noninstitutionalized group quarters	N/A*	4	Yes	P_GROUPQ	Proportion of persons in institutionalized and noninstitutionalized group quarters	No
Percentage of persons in institutionalized and noninstitutionalized group quarters estimate, 2010-2014 ACS	EP_GROUPQ	4	No	N/A*		Yes
Percentage of persons in institutionalized and noninstitutionalized group quarters estimate MOE, 2010-2014 ACS	MP_GROUPQ	4	No	N/A*		Yes
Percentile percentage of persons below poverty estimate	EPL_POV	1	No	E_PL_POV	Percentile proportion of persons below poverty estimate, no consideration of MOE	No
Percentile percentage of civilian (age 16+) unemployed estimate	EPL_UNEMP	1	No	E_PL_UNEMP	Percentile proportion of civilian (age 16+) unemployed estimate, no consideration of MOE	No
Percentile per capita income estimate	EPL_PCI	1	No	E_PL_PCI	Percentile per capita income estimate, no consideration of MOE	No
Percentile percentage of persons with no high school diploma (age 25+) estimate	EPL_NOHSDP	1	No	E_PL_NOHSDIP	Percentile proportion of persons with no high school diploma (age 25+) estimate, no consideration of MOE	No
Sum of series for Socioeconomic theme	SPL_THEME1	1	No	S_PL_THEME1	Sum of EPLxxx series for Socioeconomic theme	No
Percentile ranking for Socioeconomic theme summary	RPL_THEME1	1	No	R_PL_THEME1	Percentile ranking for Socioeconomic theme summary	No
	N/A*	2	Yes	PL_AGE65	Percentile proportion of persons aged 65 and older	No
	N/A*	2	Yes	PL_AGE17	Percentile proportion of persons aged 17 and younger	No

2014 DESCRIPTION	2014 VARIABLE NAME	THEME	FIELD NAME CHANGED SINCE 2010?	2010 VARIABLE NAME	2010 DESCRIPTION	FIELD NAME CHANGED SINCE 2000?
	N/A*	2	Yes	PL_SNGPRNT	Percentile proportion of single parent households with children under 18	No
Percentile percentage of persons aged 65 and older estimate	EPL_AGE65	2	No	N/A*		Yes
Percentile percentage of persons aged 17 and younger estimate	EPL_AGE17	2	No	N/A*		Yes
Percentile percentage of civilian noninstitutionalized population with a disability estimate	EPL_DISABL	2	No	N/A*		Yes
Percentile percentage of single parent households with children under 18 estimate	EPL_SNGPNT	2	No	N/A*		Yes
Sum of series for Household Composition theme	SPL_THEME2	2	No	S_PL_THEME2	Sum of PLxxx series for Household Composition theme	No
Percentile ranking for Household Composition theme summary	RPL_THEME2	2	No	R_PL_THEME2	Percentile ranking for Household Composition theme summary	No
	N/A*	3	Yes	PL_MINORITY	Percentile proportion minority (all persons except white, non-Hispanic)	No
Percentile percentage minority (all persons except white, non-Hispanic) estimate	EPL_MINRTY	3	No	N/A*		Yes
Percentile percentage of persons (age 5+) who speak English "less than well" estimate	EPL_LIMENG	3	No	E_PL_LIMENG	Percentile proportion of persons (age 5+) who speak English "less than well" estimate, no consideration of MOE	No
Sum of series for Minority Status/Language theme	SPL_THEME3	3	No	S_PL_THEME3	Sum of PLxxx series for Minority Status/Language theme	No

2014 DESCRIPTION	2014 VARIABLE NAME	THEME	FIELD NAME CHANGED SINCE 2010?	2010 VARIABLE NAME	2010 DESCRIPTION	FIELD NAME CHANGED SINCE 2000?
Percentile ranking for Minority Status/Language theme	RPL_THEME3	3	No	R_PL_THEME3	Percentile ranking for Minority Status/Language theme	No
Percentile percentage housing in structures with 10 or more units estimate	EPL_MUNIT	4	No	E_PL_MUNIT	Percentile proportion housing in structures with 10 or more units estimate	No
Percentile percentage mobile homes estimate	EPL_MOBILE	4	No	E_PL_MOBILE	Percentile proportion mobile homes estimate	No
Percentile percentage households with more people than rooms estimate	EPL_CROWD	4	No	E_PL_CROWD	Percentile proportion households with more people than rooms estimate	No
Percentile percentage households with no vehicle available estimate	EPL_NOVEH	4	No	E_PL_NOVEH	Percentile proportion households with no vehicle available estimate	No
	N/A*	4	Yes	PL_GROUPQ	Percentile proportion persons in institutionalized and noninstitutionalized group quarters	No
Percentile percentage of persons in institutionalized and noninstitutionalized group quarters estimate	EPL_GROUPQ	4	No	N/A*		Yes
Sum of series for Housing/Transportation theme	SPL_THEME4	4	No	S_PL_THEME4	Sum of PLxxx series for Housing/Transportation theme	No
Percentile ranking for Housing/Transportation theme	RPL_THEME4	4	No	R_PL_THEME4	Percentile ranking for Housing/Transportation theme	No
Sum of series themes	SPL_THEMES		No	S_PL_THEMES	Sum of PLxxx series themes	No
Overall percentile ranking	RPL_THEMES		No	R_PL_THEMES	Overall percentile ranking	No
Flag -the percentage of persons in poverty is in the 90th percentile (1 = yes, 0 = no)	F_POV	1	No	F_PL_POV	Flag -the proportion of persons in poverty is in the 90th percentile (1 = yes, 0 = no)	No

2014 DESCRIPTION	2014 VARIABLE NAME	THEME	FIELD NAME CHANGED SINCE 2010?	2010 VARIABLE NAME	2010 DESCRIPTION	FIELD NAME CHANGED SINCE 2000?
Flag -the percentage of civilian unemployed is in the 90th percentile (1 = yes, 0 = no)	F_UNEMP	1	No	F_PL_UNEMP	Flag -the proportion of civilian unemployed is in the 90th percentile (1 = yes, 0 = no)	No
Flag -per capita income is in the 90th percentile (1 = yes, 0 = no)	F_PCI	1	No	F_PL_PCI	Flag -per capita income is in the 90th percentile (1 = yes, 0 = no)	No
Flag -the percentage of persons with no high school diploma is in the 90th percentile (1 = yes, 0 = no)	F_NOHSDP	1	No	F_PL_NOHSDIP	Flag -the proportion of persons with no high school diploma is in the 90th percentile (1 = yes, 0 = no)	No
Sum of flags for Socioeconomic Status theme	F_THEME1	1	No	F_PL_THEME1	Sum of flags for Socioeconomic Status theme	No
Flag - the percentage of persons aged 65 and older is in the 90th percentile (1 = yes, 0 = no)	F_AGE65	2	No	F_PL_AGE65	Flag - the proportion of persons aged 65 and older is in the 90th percentile (1 = yes, 0 = no)	No
Flag - the percentage of persons aged 17 and younger is in the 90th percentile (1 = yes, 0 = no)	F_AGE17	2	No	F_PL_AGE17	Flag - the proportion of persons aged 17 and younger is in the 90th percentile (1 = yes, 0 = no)	No
Flag - the percentage of persons with a disability is in the 90th percentile (1 = yes, 0 = no)	F_DISABL	2	No	N/A*		Yes
Flag - the percentage of single parent households is in the 90th percentile (1 = yes, 0 = no)	F_SNGPNT	2	No	F_PL_SNGPRNT	Flag - the proportion of single parent households is in the 90th percentile (1 = yes, 0 = no)	No
Sum of flags for Household Composition theme	F_THEME2	2	No	F_PL_THEME2	Sum of flags for Household Composition theme	No

2014 DESCRIPTION	2014 VARIABLE NAME	THEME	FIELD NAME CHANGED SINCE 2010?	2010 VARIABLE NAME	2010 DESCRIPTION	FIELD NAME CHANGED SINCE 2000?
Flag - the percentage of minority is in the 90th percentile (1 = yes, 0 = no)	F_MINRTY	3	No	F_PL_MINORITY	Flag - the proportion of minority is in the 90th percentile (1 = yes, 0 = no)	No
Flag - the percentage those with limited English is in the 90th percentile (1 = yes, 0 = no)	F_LIMENG	3	No	F_PL_LIMENG	Flag - the proportion those with limited English is in the 90th percentile (1 = yes, 0 = no)	No
Sum of flags for Minority Status/Language theme	F_THEME3	3	No	F_PL_THEME3	Sum of flags for Minority Status/Language theme	No
Flag - the percentage of households in multi-unit housing is in the 90th percentile (1 = yes, 0 = no)	F_MUNIT	4	No	F_PL_MUNIT	Flag - the proportion of households in multi-unit housing is in the 90th percentile (1 = yes, 0 = no)	No
Flag - the percentage of mobile homes is in the 90th percentile (1 = yes, 0 = no)	F_MOBILE	4	No	F_PL_MOBILE	Flag - the proportion of mobile homes is in the 90th percentile (1 = yes, 0 = no)	No
Flag - the percentage of crowded households is in the 90th percentile (1 = yes, 0 = no)	F_CROWD	4	No	F_PL_CROWD	Flag - the proportion of crowded households is in the 90th percentile (1 = yes, 0 = no)	No
Flag - the percentage of households with no vehicles is in the 90th percentile (1 = yes, 0 = no)	F_NOVEH	4	No	F_PL_NOVEH	Flag - the proportion of households with no vehicles is in the 90th percentile (1 = yes, 0 = no)	No
Flag - the percentage of persons in institutionalized and noninstitutionalized group quarters is in the 90th percentile (1 = yes, 0 = no)	F_GROUPQ	4	No	F_PL_GROUPQ	Flag - the proportion of persons in institutionalized and noninstitutionalized group quarters is in the 90th percentile (1 = yes, 0 = no)	No
Sum of flags for Housing/Transportation theme	F_THEME4	4	No	F_PL_THEME4	Sum of flags for Housing/Transportation theme	No
Sum of flags for the four themes	F_TOTAL	4	No	F_PL_TOTAL	Sum of flags for the four themes	No

2014 DESCRIPTION	2014 VARIABLE NAME	THEME	FIELD NAME CHANGED SINCE 2010?	2010 VARIABLE NAME	2010 DESCRIPTION	FIELD NAME CHANGED SINCE 2000?
Adjunct variable - Uninsured in the total civilian noninstitutionalized population estimate, 2010-2014 ACS	E_UNINSUR		No	N/A*		Yes
Adjunct variable - Uninsured in the total civilian noninstitutionalized population estimate MOE, 2010-2014 ACS	M_UNINSUR		No	N/A*		Yes
Adjunct variable - Percentage uninsured in the total civilian noninstitutionalized population estimate, 2010-2014 ACS	EP_UNINSUR		No	N/A*		Yes
Adjunct variable - Percentage uninsured in the total civilian noninstitutionalized population estimate MOE, 2010-2014 ACS	MP_UNINSUR		No	N/A*		Yes
Adjunct variable - Estimated daytime population, LandScan 2012	E_DAYPOP		No	N/A*		Yes