

# CDC/ATSDR PFAS Exposure Assessment Community Level Results

Lubbock County, TX near Reese Technology Center

INFORMATION TO PROTECT OUR COMMUNITIES



In 2019, the Centers for Disease Control and Prevention (CDC) and the Agency for Toxic Substances and Disease Registry (ATSDR) started exposure assessments (EAs) in communities near current or former military bases known to have had per- and polyfluoroalkyl substances (PFAS) in their drinking water. Individuals who participated in the EAs provided blood and urine samples to CDC/ATSDR for analysis. We sent letters with lab results to the participants.

We are also reviewing additional information, like age and location, to better understand the community's exposure. Once our full analysis is complete, CDC/ATSDR will host a community meeting to share our findings and recommendations.

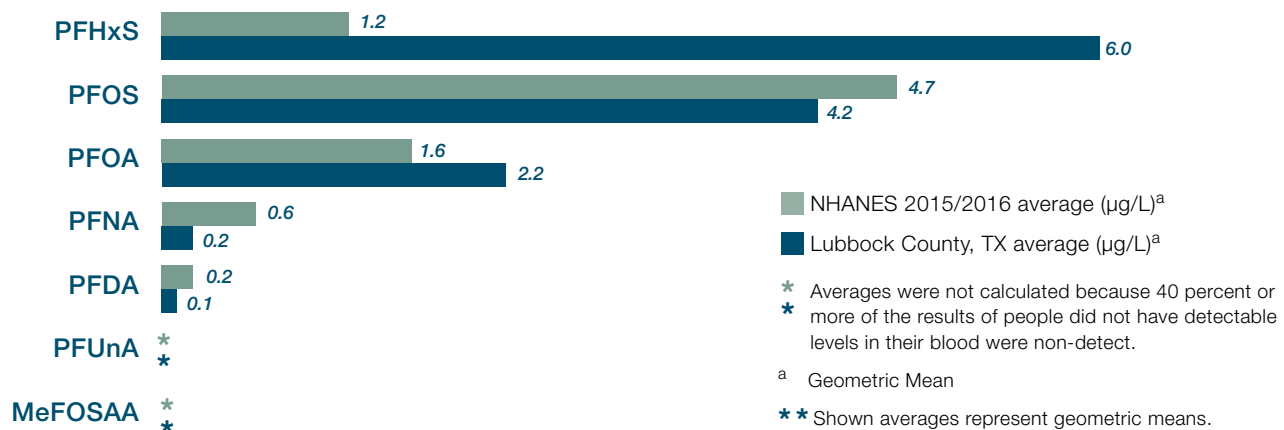
The Lubbock County, TX EA site focused on an area near Reese Technology Center. A map of the sampling area can be found at: [www.atsdr.cdc.gov/pfas/activities/assessments/sites/lubbock-county-tx.html](http://www.atsdr.cdc.gov/pfas/activities/assessments/sites/lubbock-county-tx.html)

## PFAS Levels in Blood

The lab tested participants' blood for 7 different PFAS. PFAS levels are measured in micrograms per liter ( $\mu\text{g/L}$ ).

CDC/ATSDR compared the levels of PFAS in participant's blood across the community to the levels found in the U.S. population. Two PFAS (PFHxS and PFOA) were detected above national averages. The levels of MeFOSAA, PFOA, PFUnA, PFNA, and PFDA were similar to or below national averages.

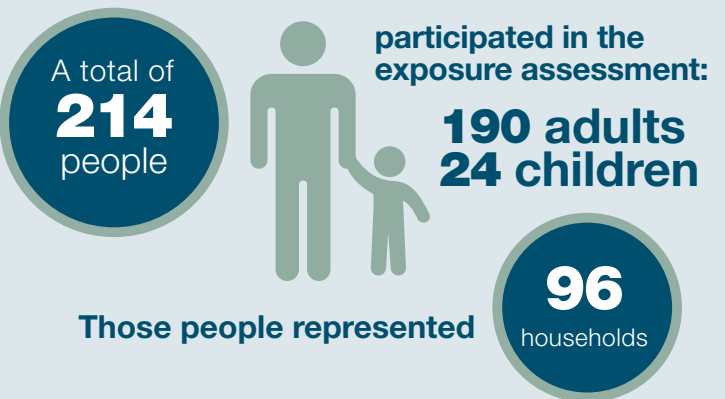
## PFAS Levels in Blood Compared to National Averages\*\*



The numbers below show the **percentage** of participants with PFAS levels above the national average.

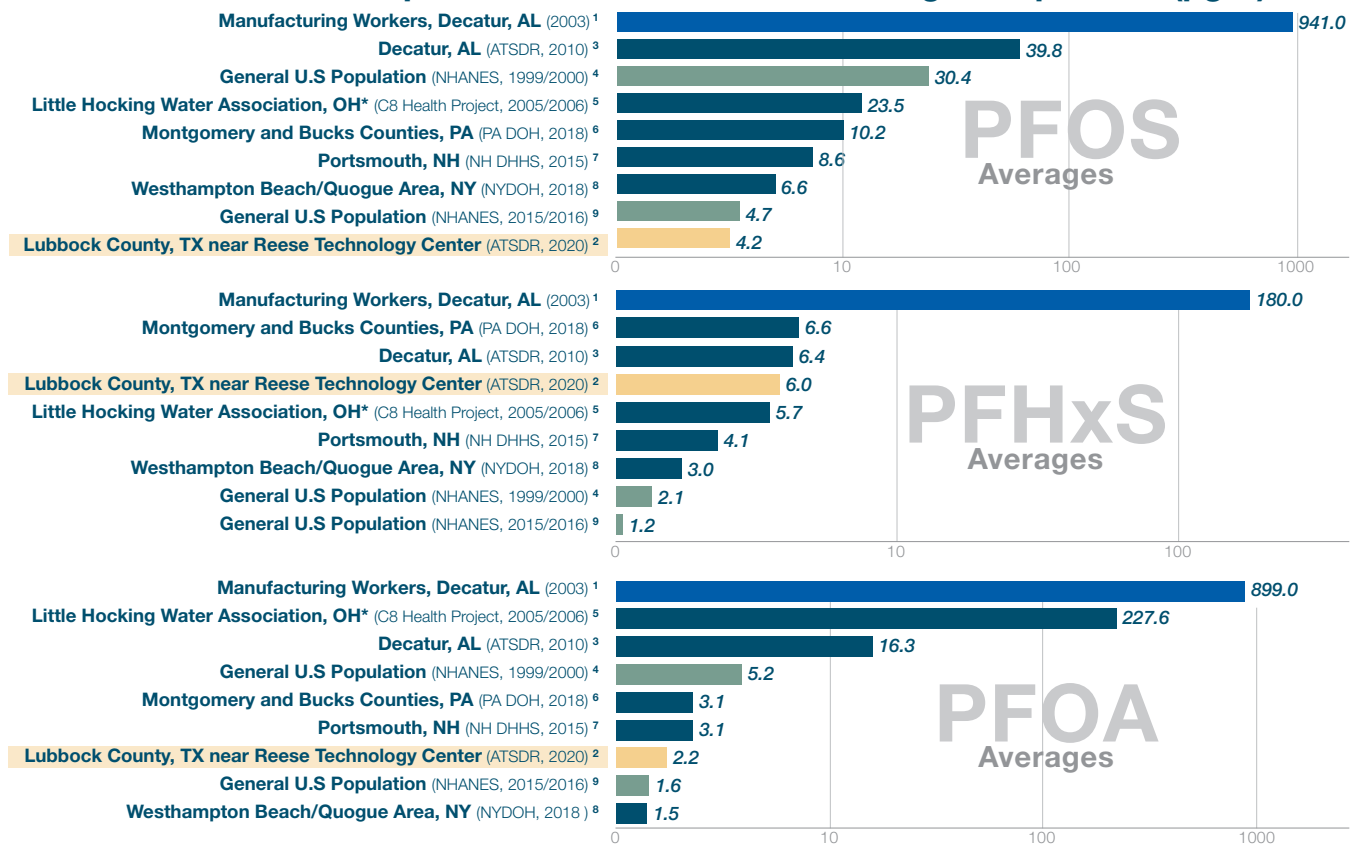


## Lubbock County, TX near Reese Technology Center PFAS Exposure Assessment Participation



Since 1999, the National Health and Nutrition Examination Survey (NHANES) has measured PFAS levels in blood in the U.S. population. Most people in the United States have been exposed to PFAS and have PFAS in their blood.

## PFAS Levels in Blood Compared to Other Studies in micrograms per liter (µg/L)\*\*



**References:**

- <https://www.tandfonline.com/doi/pdf/10.1080/15428110308984859?needAccess=true>
- CDC/ATSDR, 2020
- [https://www.atsdr.cdc.gov/HAC/pha/Decatur/Perfluorochemical\\_Serum%20Sampling.pdf](https://www.atsdr.cdc.gov/HAC/pha/Decatur/Perfluorochemical_Serum%20Sampling.pdf)
- [https://www.cdc.gov/exposurereport/pdf/FourthReport\\_UpdatedTables\\_Volume1\\_Jan2019-508.pdf](https://www.cdc.gov/exposurereport/pdf/FourthReport_UpdatedTables_Volume1_Jan2019-508.pdf)
- <https://ehp.niehs.nih.gov/doi/pdf/10.1289/ehp.0800379>
- <https://www.health.pa.gov/topics/Documents/Environmental%20Health/PEATT%20Pilot%20Project%20Final%20Report%20April%202029%202019.pdf>
- <https://www.dhhs.nh.gov/dphs/documents/pease-pfc-blood-testing.pdf>
- [https://www.health.ny.gov/environmental/investigations/drinkingwaterresponse/docs/westhampton\\_quogue\\_group\\_level\\_blood\\_testing](https://www.health.ny.gov/environmental/investigations/drinkingwaterresponse/docs/westhampton_quogue_group_level_blood_testing)
- [https://www.cdc.gov/exposurereport/pdf/FourthReport\\_UpdatedTables\\_Volume1\\_Jan2019-508.pdf](https://www.cdc.gov/exposurereport/pdf/FourthReport_UpdatedTables_Volume1_Jan2019-508.pdf)

\* The study reported medians instead of averages. \*\* Shown averages represent geometric means.

### PFAS Levels in Urine

All participants provided a urine sample, some of the samples were analyzed. PFBA and PFHxA were detected at low concentrations in 5% and 9% of the samples, respectively. Averages were not calculated because PFAS were only found in a small number of samples.

### PFAS Levels in Tap Water

CDC/ATSDR collected and tested tap water samples from some participating households. PFAS levels for all 12 tap water samples were below all federal and applicable state guidelines for PFAS in drinking water.

### PFAS Levels in Dust

CDC/ATSDR collected and analyzed indoor dust samples from 12 participating households. CDC/ATSDR is evaluating the dust sample results and will have more information in the final report.

### About the Results

CDC/ATSDR is evaluating data collected from the PFAS EA to better understand exposure in the community. The PFAS EA measures PFAS levels in people's bodies but is not able to identify health effects associated with these levels of exposure. We are working to better understand health effects from PFAS exposure through the Multi-site Health Study [www.atsdr.cdc.gov/pfas/Multi-Site-Health-Study.html](http://www.atsdr.cdc.gov/pfas/Multi-Site-Health-Study.html).

We are also reaching out to doctors, nurses, and other health care providers in your area to provide PFAS information. PFAS clinician guidance and continuing medical education can be found at <https://www.atsdr.cdc.gov/pfas/docs/clinical-guidance-12-20-2019.pdf>.

### For More Information:

Visit [www.atsdr.cdc.gov/pfas](http://www.atsdr.cdc.gov/pfas) or contact: Captain Patrick Young, ATSDR Region 6 [pay9@cdc.gov](mailto:pay9@cdc.gov) or 214-665-8562



National Center for Environmental Health Agency for Toxic Substances and Disease Registry